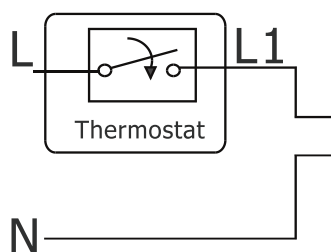
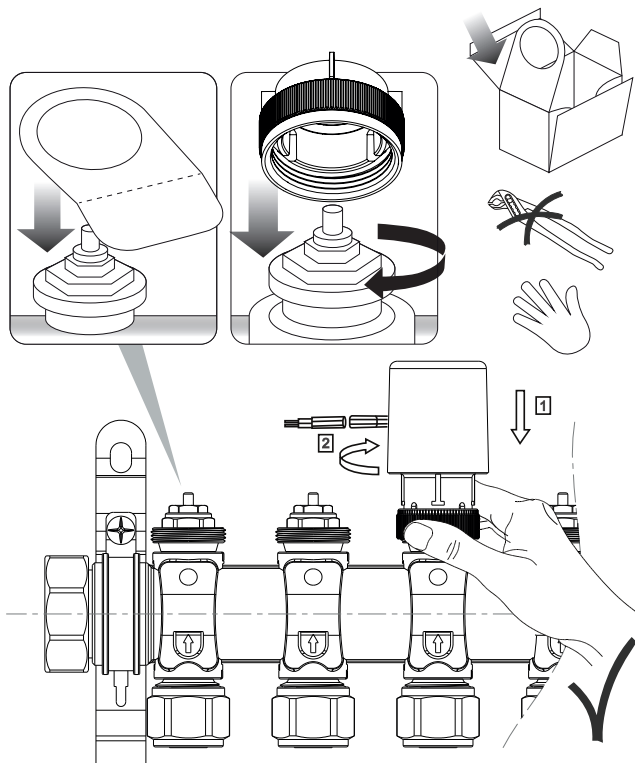




## MONTÁŽ



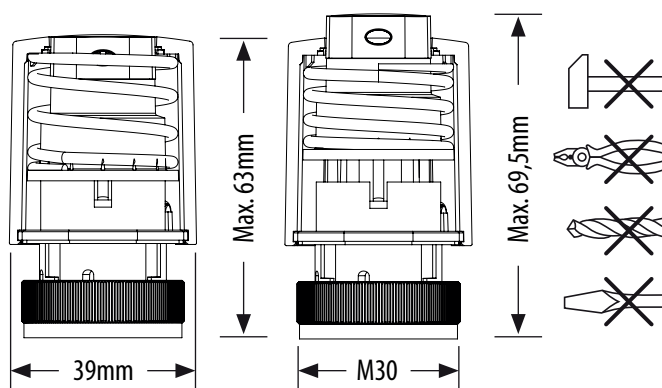
### 230V

V= 230V  
P= 2W  
IMAX= 200mA - 200mS  
IP54  
5-60 °C  
F= 100N+10%

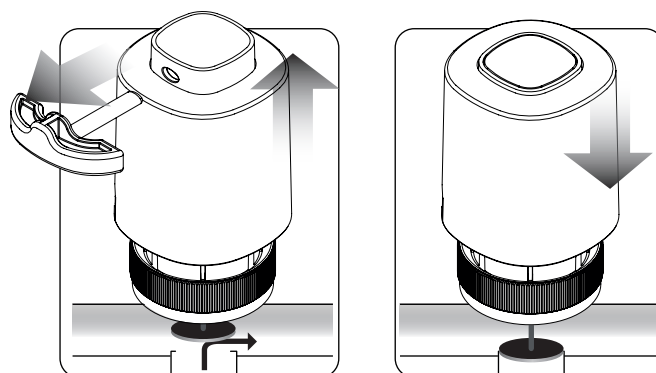
### 24V verze

V= 24V  
P= 2W  
IMAX= 250mA - 2 min  
IP54  
5-60 °C  
F= 100N+10%

## Max. zdvih - 4mm



## NC - BEZ NAPĚTÍ UZAVŘENÝ Funkce "First Open"



## PRINCIP OPERACE

